

RAPTOR SPS 4

Ergonomic & Powerful Electric System



Surgical Power Tools

Smooth speed control,
right-left rotation and oscillation
High and low speed options for
sensitive cutting performance





TABLE OF CONTENTS



8-9

DRILL ATTACHMENT



10-11

SHANK DRILL BIT ATTACHMENT



12-13

REAMER ATTACHMENT



14-15

ACETABULAR REAMER ATTACHMENT



16

QUICK - ACTION CHUCK (K-wire driver)



17

RECIPROCATING SAW SYSTEM



18-21

SAGITTAL SAW SYSTEM



22

STERNUM SAW SYSTEM

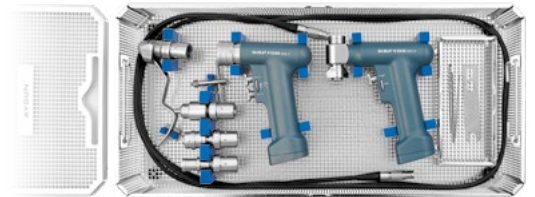
23

OSCILLATING SAW SYSTEM (Re-Operation)



24

ORTHOPEDIC SET



25

DRILL SET



26

SAGITTAL SAW SET



27

RECIPROCATING SAW SET



28

STERNAL SAW SET



29

CARDIO VASCULAR SET



30-31

CONTAINER SET FOR STERILIZATION



- Less Weight, High Power
- Next Generation Cutting Technology
- New Generation Surgical Motor Technology



RAPTOR SPS 4

- Smooth speed control, right-left rotation and oscillation;
- High and low speed options for sensitive cutting performance;
- One hand piece solution for reaming, high speed drilling, screw driving and tapping functions with high torque performance;
- Easy handling and ergonomic design of Raptor ensures reliable and better controlled operation results;
- Replacing attachments and blades using quick couplings;
- High performance long reliability.



//////////////////// *Hexa - Function Drill System*

- Drill Mode (F&R)
- Drill Oscillation Mode
- Screwing Mode (F&R)
- Tapping Mode
- Reamer Mode (F&R)
- Reamer Oscillation Mode



//////////////////// *Sternum Saw System*



//////////////////// *Reciprocating Saw System*



//////////////////// *Sagittal Saw System*

POWER SUPPLY & CABLE



M300-228

Raptor Power Supply

- Two motor output
- Main voltage 100-240 Volts, 50/60 Hz
- 400 watt
- Informs the user with indicator leds about motor status
- Cable not included
- Protections: Short circuit / Overload / Over voltage
- 230 x 236 x 107 mm / 2560 g



M300-223

Motor Cable (4 m. long)

DRILL-REAMER SYSTEM



Six
Different
Trigger
Functions



M300-200
Hexa - Function Drill Handpiece
(Without attachment and cable)

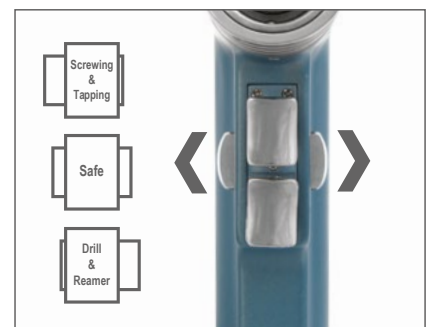
- Dual trigger system for speed control and direction control
- Steam sterilisable
- Drill Mode F&R (1200 rpm)
- Drill Oscillation Mode (1200 cpm)
- Screwing Mode F&R (150 rpm)
- Tapping Mode (150 rpm)
- Reamer Mode F&R (300 rpm)
- Reamer Oscillation Mode (300 cpm)
- Cannulated Ø 4 mm
- 40 x 129 x 183 mm / 1000 g



Forward, reverse and oscillation mode options provide versatile alternatives to the users.



Screwing and tapping options enable smooth control with one-handpiece solution.



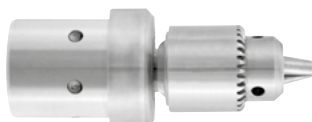
Drilling, Reaming, Screwing and Tapping options in one-handpiece

DRILL ATTACHMENTS

M206-308

Drill attachment with keyed chuck

Ø4 mm Cannulated
 Ø 1.0 mm - 4.0 mm
 1200 rpm / 5 Nm
 29 x 70 mm / 140 g

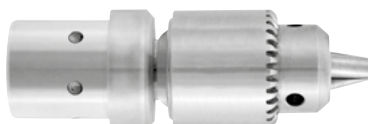


M8-473
 Chuck key
 for M206-308

M206-309

Drill attachment with keyed chuck

Ø4 mm Cannulated
 Ø 1.0 mm - 6.35 mm
 1200 rpm / 5 Nm
 29 x 87 mm / 205 g

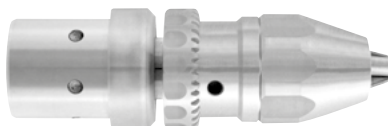


M7-250
 Chuck key
 for M206-309

M206-311

Drill attachment with hybrid chuck
 Both keyed and keyless operation

Ø4 mm Cannulated
 Ø 0.3 mm - 3 mm
 1200 rpm / 5 Nm
 29 x 87 mm / 225 g

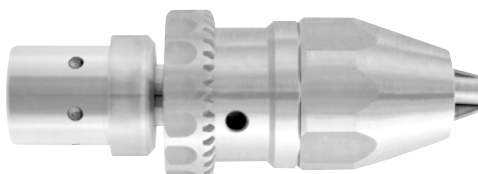


M7-253
 Chuck key
 for M206-311

M206-310

Drill attachment with hybrid chuck
 Both keyed and keyless operation

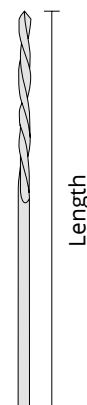
Ø4 mm Cannulated
 Ø 1.0 mm - 7.4 mm
 1200 rpm / 5 Nm
 34 x 100 mm / 320 g



M7-252
 Chuck key
 for M206-310

DRILL BITS

Code	(Ø) Diameter mm	Length mm
M7-500	1.5	60
M7-501	2.0	100
M7-502	2.5	100
M7-503	2.7	100
M7-504	3.0	100
M7-505	3.2	100
M7-506	3.5	100
M7-507	4.0	110
M7-508	4.5	130
M7-509	5.0	160
M7-510	6.0	160

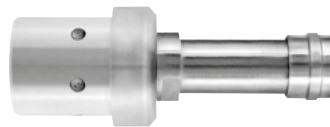


SHANK DRILL BIT ATTACHMENTS

M206-360

Attachment for SQUARE shank

1200 rpm / 5 Nm
29 x 75 mm / 115 g



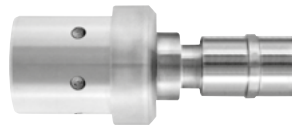
SQUARE



M206-361

Attachment for AO shank

1200 rpm / 5 Nm
29 x 73 mm / 125 g



AO



M206-362

Attachment for TRINKE shank

1200 rpm / 5 Nm
29 x 70 mm / 130 g



TRINKE



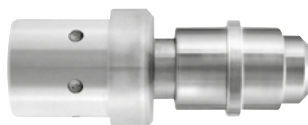
SHANK DRILL BITS

Length mm	(Ø) Diameter mm	SQUARE	AO	TRINKE
38	1.5	M7-520	M7-540	M7-560
45	2.0	M7-521	M7-541	M7-561
53	2.5	M7-522	M7-542	M7-562
57	2.7	M7-523	M7-543	M7-563
57	3.0	M7-524	M7-544	M7-564
57	3.2	M7-525	M7-545	M7-565
65	3.5	M7-526	M7-546	M7-566
70	4.0	M7-527	M7-547	M7-567
70	4.5	M7-528	M7-548	M7-568
95	5.0	M7-529	M7-549	M7-569
120	6.0	M7-530	M7-550	M7-570

M206-375

Attachment for OSTEO shank

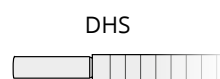
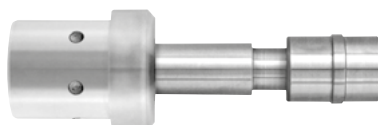
Ø4 mm Cannulated
300 rpm / 22 Nm
29 x 78 mm / 160 g



M206-376

Attachment for DHS shank

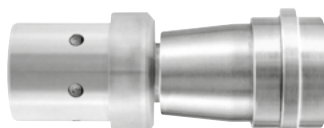
Ø4 mm Cannulated
300 rpm / 22 Nm
29 x 100 mm / 170 g



M206-377

Attachment for AO-PROTEK shank

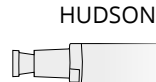
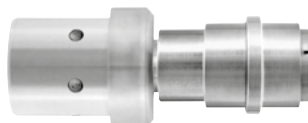
Ø4 mm Cannulated
300 rpm / 22 Nm
29 x 82 mm / 210 g



M206-378

Attachment for HUDSON shank

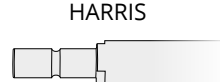
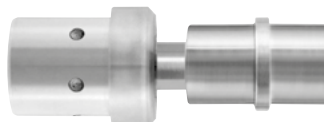
Ø4 mm Cannulated
300 rpm / 22 Nm
29 x 68 mm / 145 g



M206-320

Attachment for HARRIS shank

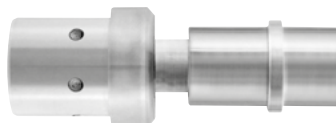
150 - 300 rpm / 35 Nm
29 x 80 mm / 175 g



M206-380

Attachment for ZIMMER-HUDSON shank

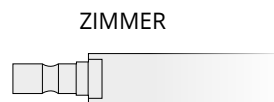
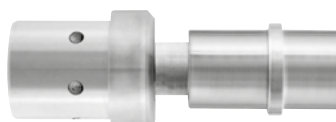
Ø4 mm Cannulated
300 rpm / 22 Nm
29 x 115 mm / 155 g



M206-381

Attachment for ZIMMER shank

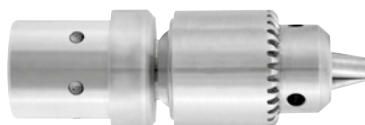
Ø4 mm Cannulated
300 rpm / 22 Nm
29 x 115 mm / 155 g



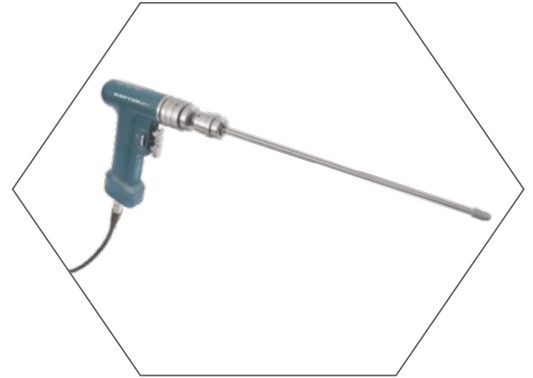
M206-312

Reamer attachment with keyed chuck

Ø4 mm Cannulated
Ø 1.0 mm - 7.4 mm
300 rpm / 22 Nm
29 x 87 mm / 205 g

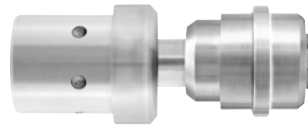


REAMER ATTACHMENT



M206-330

Reamer attachment for wire and pin
Cannulated \varnothing 4 mm
300 rpm / 22 Nm
29 x 80 mm / 185 g



DIN 58809



M7-905

Adaptor for AO-Protek shank
Cannulated \varnothing 4 mm



DIN 58809

AO-PROTEK



M7-908

Adaptor for Hudson
Cannulated \varnothing 4 mm



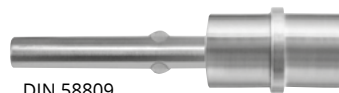
DIN 58809

HUDSON



M7-907

Adaptor for Harris
Cannulated \varnothing 4 mm



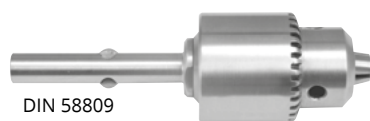
DIN 58809

HARRIS



M7-906

Universal three-jaw chuck
with key M7-250
Max \varnothing 6.35 mm
Cannulated \varnothing 4 mm



DIN 58809

DRILL



M7-250
Chuck key
for M7-906

REAMERS

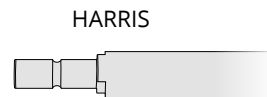
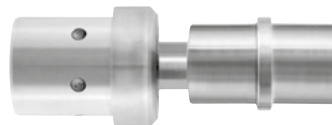
Intramedullary reamers, flexible, with drilling heads		Guides, blunt			Guides, with drill tip		
Ø mm	Length 430 mm	Ø mm	Length 600 mm	Length 990 mm	Ø mm	Length 600 mm	Length 990 mm
5.5	M7-920						
6.0	M7-921						
6.5	M7-922	1.9	M7-960	M7-961	1.9	M7-962	
7.0	M7-923						
7.5	M7-924						
8.0	M7-925						
8.5	M7-926						
9.0	M7-927						
9.5	M7-928						
10.0	M7-929						
10.5	M7-930						
11.0	M7-931						
11.5	M7-932						
12.0	M7-933	3.4	M7-963	M7-964	3.4		M7-965
12.5	M7-934						
13.0	M7-935						
13.5	M7-936						
14.0	M7-937						
14.5	M7-938						
15.0	M7-939						
15.5	M7-940						
16.0	M7-941						
16.5	M7-942						
17.0	M7-943						
17.5	M7-944						
18.0	M7-945						
18.5	M7-946						
19.0	M7-947						

DIN 58809

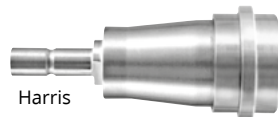


ACETABULAR REAMER ATTACHMENT

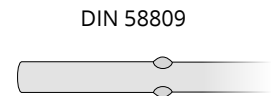
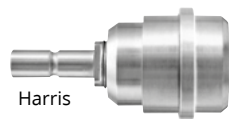
M206-320
Acetabular reamer attachment
150 - 300 rpm / 35 Nm
29 x 80 mm / 175 g



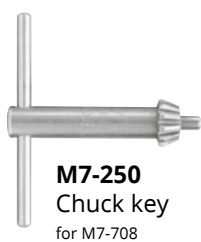
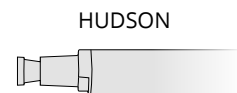
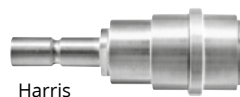
M7-705
Adaptor for AO-Protek shaft



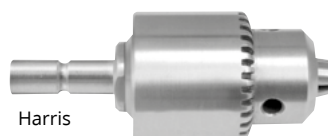
M7-706
Adaptor for DIN 58809 shaft



M7-707
Adaptor for Hudson shaft



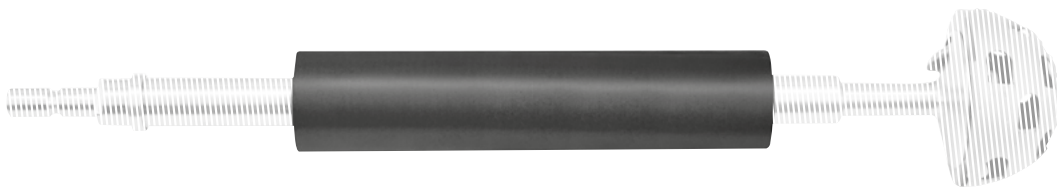
M7-708
Universal three-jaw chuck
with key M7-250



ACETABULAR REAMER TOOLS



M7-709
 Shaft only,
 With Harris Connection
 for M7-750, M7-757



M7-789
 Movable protector case,
 Fits with all reamer shafts

Only Acetabular Reamer		M7-750	Ø 46 mm
		M7-751	Ø 48 mm
		M7-752	Ø 50 mm
		M7-753	Ø 52 mm
		M7-754	Ø 56 mm
		M7-755	Ø 60 mm
		M7-756	Ø 64 mm
		M7-757	Ø 68 mm

QUICK - ACTION CHUCK

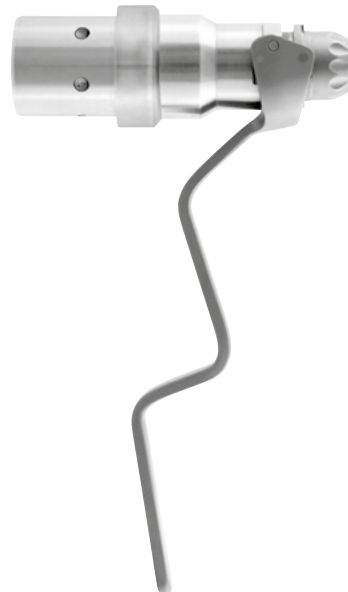
(K-wire Driver)



M206-349
Quick - action chuck (K-wire Driver)
Cannulated Ø 0.6 mm - 1.0 mm
1200 rpm / 5 Nm
29 X 77 mm / 300 g

M206-352
Quick - action chuck (K-wire Driver)
Cannulated Ø 0.7 mm - 2.5 mm
1200 rpm / 5 Nm
29 X 77 mm / 300 g

M206-353
Quick - action chuck (K-wire Driver)
Cannulated Ø 1.5 mm - 4.0 mm
1200 rpm / 5 Nm
29 X 77 mm / 300 g



RECIPROCATING SAW SYSTEM



M300-235
Reciprocating Saw Handpiece
(Without saw blades and cable)

High-Low speed options
Steam sterilisable
11.000 - 14.000 cpm / \longleftrightarrow 4 mm
40 x 162 x 185 mm / 1140 g

RECIPROCATING SAW BLADES

M103-236
Usable length: 62 mm
Width: 8 mm



M103-237
Usable length: 75 mm
Width: 13 mm



M103-238
Usable length: 60 mm
Width: 13 mm



M103-239
Usable length: 75 mm
Width: 13 mm



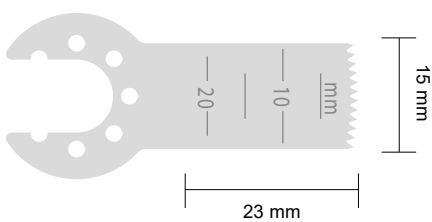
SAGITTAL SAW SYSTEM



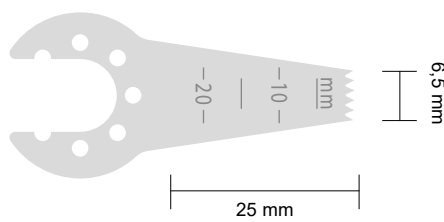
M300-300
Oscillating Saw Handpiece
(Without saw blades and cable)

High-Low speed options
Steam sterilisable
11.000 - 14.000 cpm / \angle 4° 50'
40 x 152 x 196 mm / 1070 g

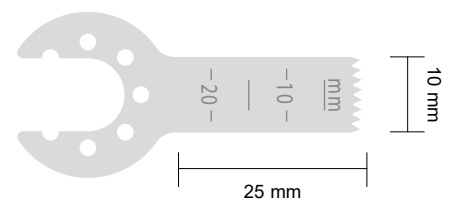
SAGITTAL SAW BLADES



M103-1110
Material Thickness : 0.4 mm
Cutting Thickness : 0.6 mm



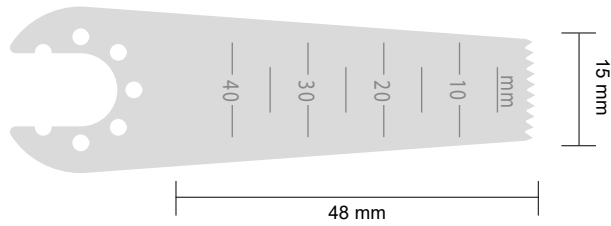
M103-1111
Material Thickness : 0.4 mm
Cutting Thickness : 0.6 mm



M103-1112
Material Thickness : 0.4 mm
Cutting Thickness : 0.6 mm

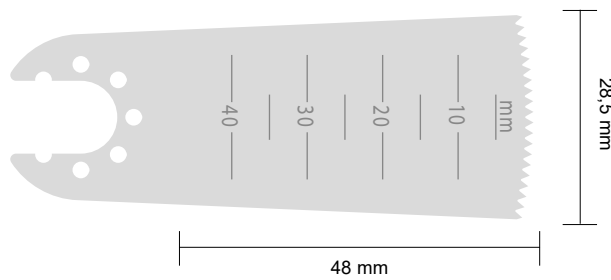
M103-1113

Material Thickness : 0.4 mm
Cutting Thickness : 0.6 mm



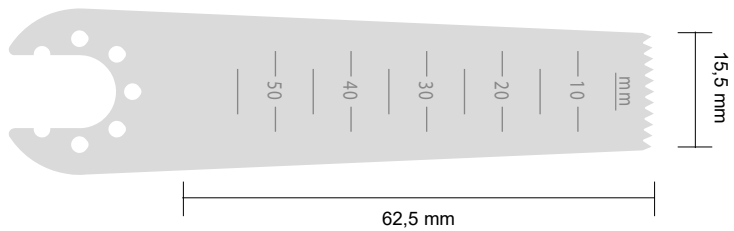
M103-1114

Material Thickness : 0.4 mm
Cutting Thickness : 0.6 mm



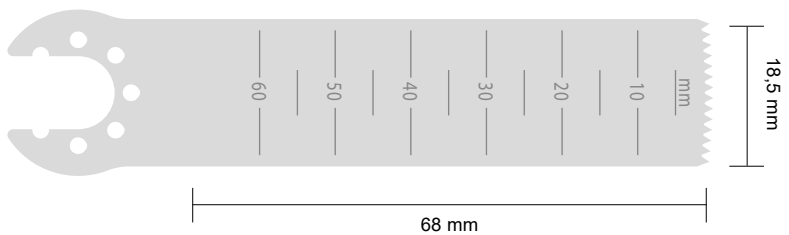
M103-1115

Material Thickness : 0.6 mm
Cutting Thickness : 0.8 mm



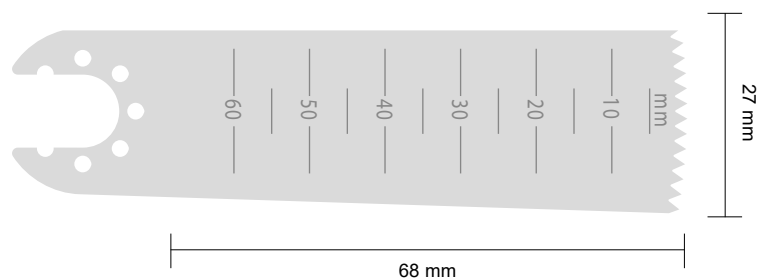
M103-1116

Material Thickness : 0.6 mm
Cutting Thickness : 0.8 mm



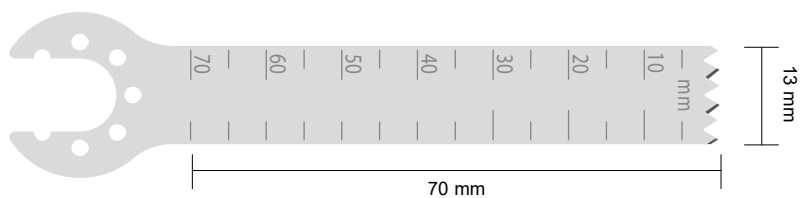
M103-1117

Material Thickness : 0.6 mm
Cutting Thickness : 0.8 mm



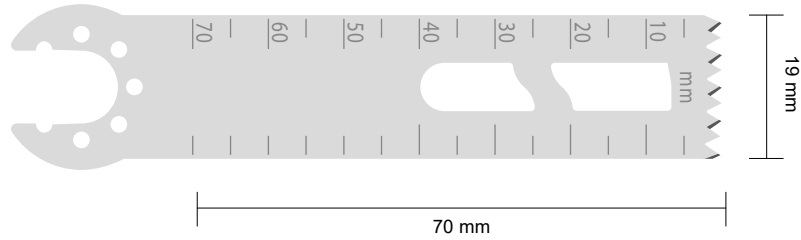
M103-1118

Material Thickness : 1.19 mm



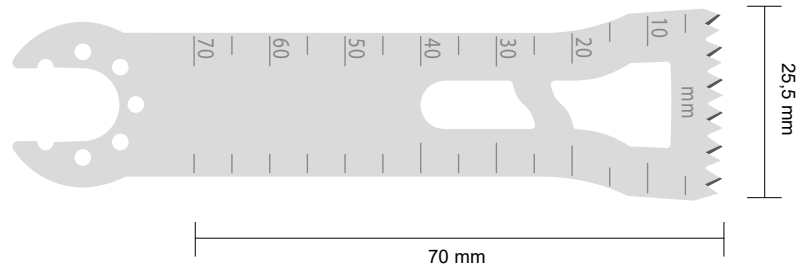
M103-1119

Material Thickness: 1 mm



M103-1120

Material Thickness: 1 mm



M103-1121

Material Thickness

1 mm

M103-1122

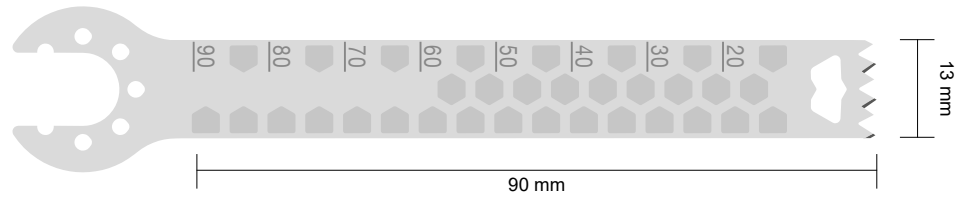
1.19 mm

M103-1123

1.27 mm

M103-1124

1.37 mm



M103-1125

Material Thickness

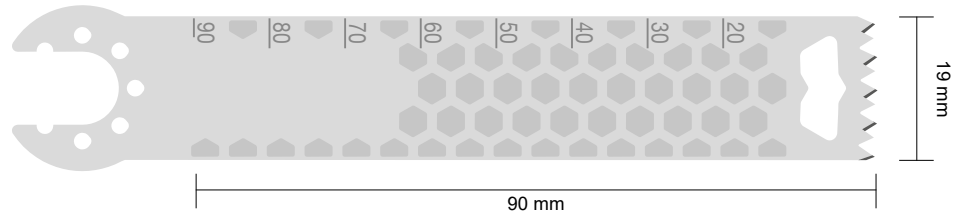
1.19 mm

M103-1126

1.27 mm

M103-1127

1.37 mm



M103-1128

Material Thickness

1 mm

M103-1129

1.19 mm

M103-1130

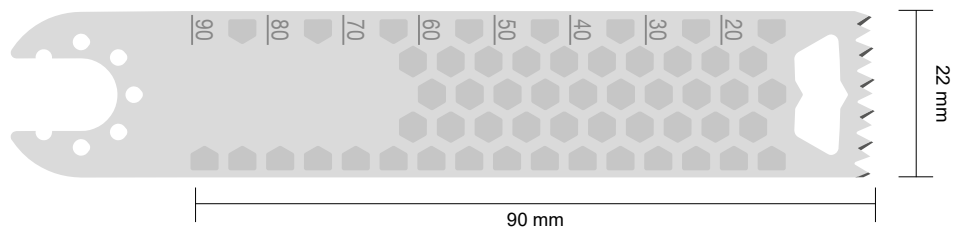
1.27 mm

M103-1131

1.37 mm

M103-1132

1.47 mm



M103-1133

Material Thickness

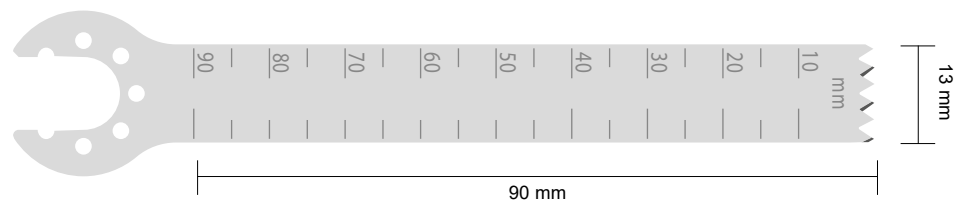
1 mm

M103-1134

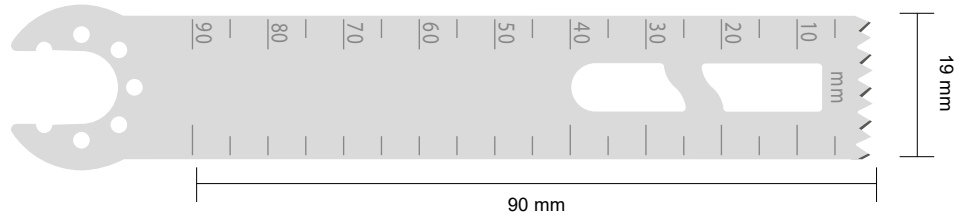
1.19 mm

M103-1135

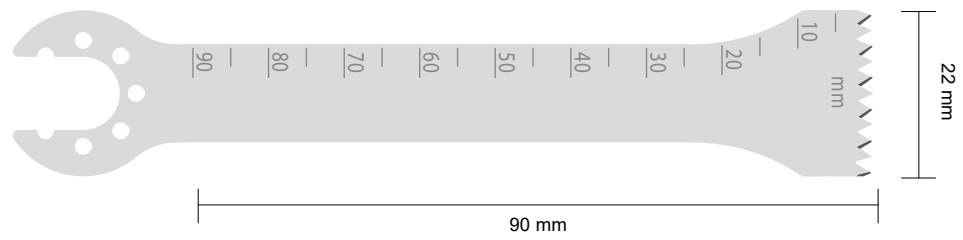
1.27 mm



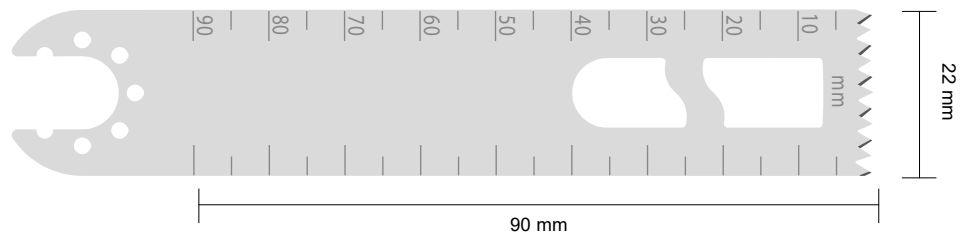
Material Thickness
M103-1136 1.27 mm
M103-1137 1.37 mm



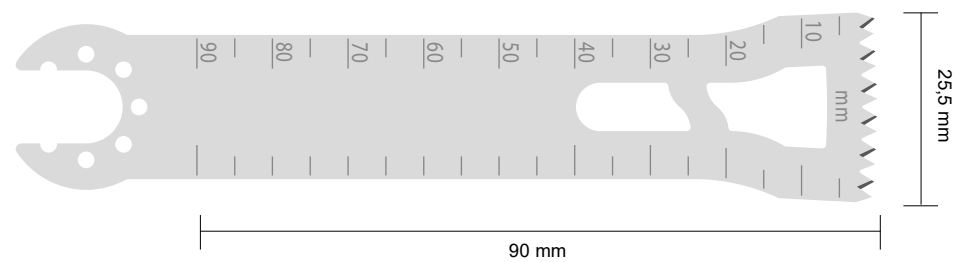
M103-1138
 Material Thickness: 1.27 mm



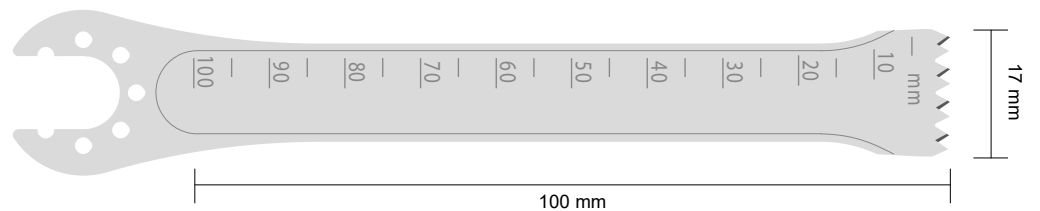
Material Thickness
M103-1139 1 mm
M103-1140 1.27 mm



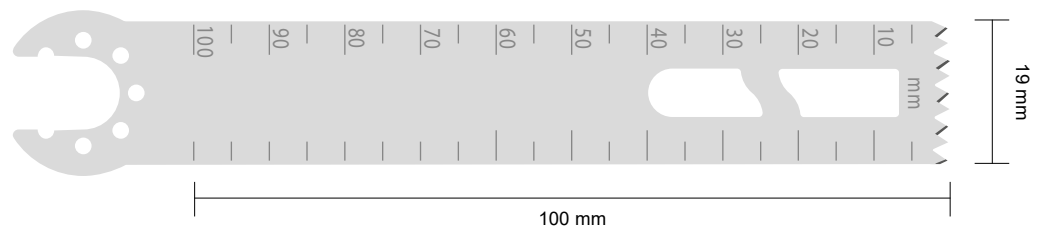
Material Thickness
M103-1141 1 mm
M103-1142 1.19 mm
M103-1143 1.27 mm
M103-1144 1.37 mm
M103-1145 1.47 mm



M103-1146
 Material Thickness: 1.27 mm



M103-1147
 Material Thickness: 1.19 mm



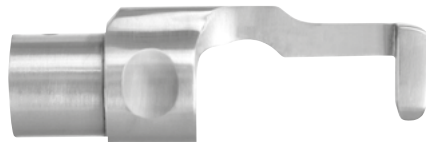
STERNUM SAW SYSTEM



M300-240
Sternum Saw Handpiece
(Without saw blades, guide and cable)

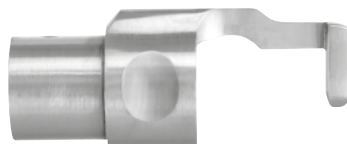
High-Low speed options
Steam sterilisable
11.000 - 14.000 cpm / \leftrightarrow 4 mm
40 x 162 x 185 mm / 1125 g

M103-715
Adult saw guide



Adult saw blade	Code	Length	Usable Length	Blade Thickness	Cutting Thickness
	M103-709	58 mm	35 mm	0.6 mm	1 mm
	M103-710	58 mm	35 mm	0.8 mm	1.2 mm

M103-716
Pediatric saw guide



Pediatric saw blade	Code	Length	Usable Length	Blade Thickness	Cutting Thickness
	M103-711	40 mm	18 mm	0.6 mm	0.6 mm
	M103-712	40 mm	18 mm	0.6 mm	0.8 mm

OSCILLATING SAW SYSTEM

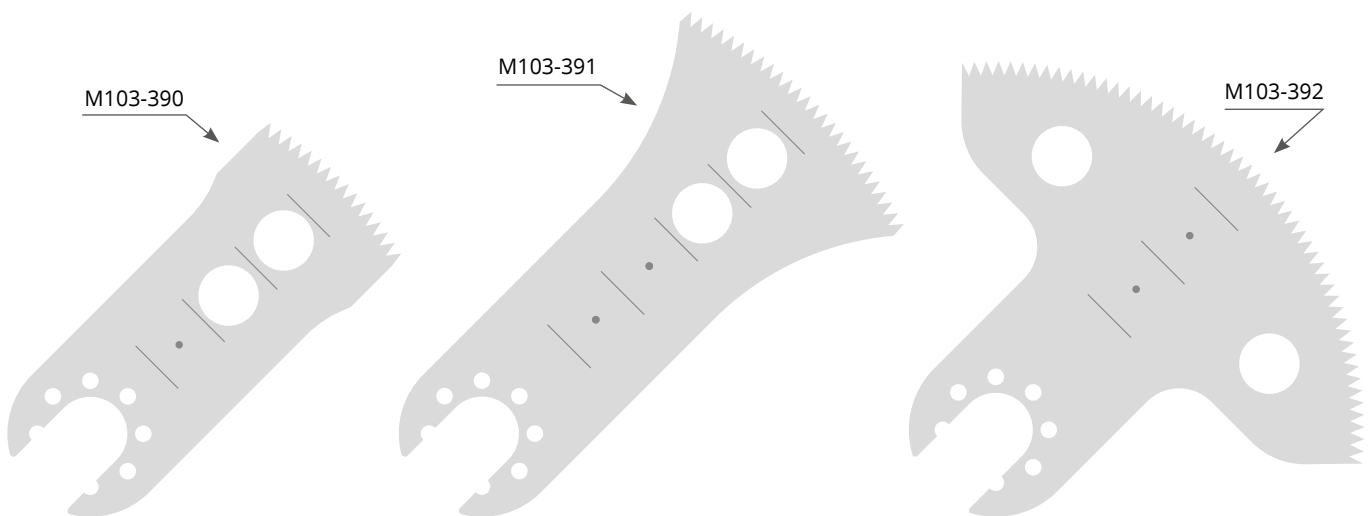
(Re-operation)



M300-300
Oscillating Saw Handpiece
(Without saw blades and cable)

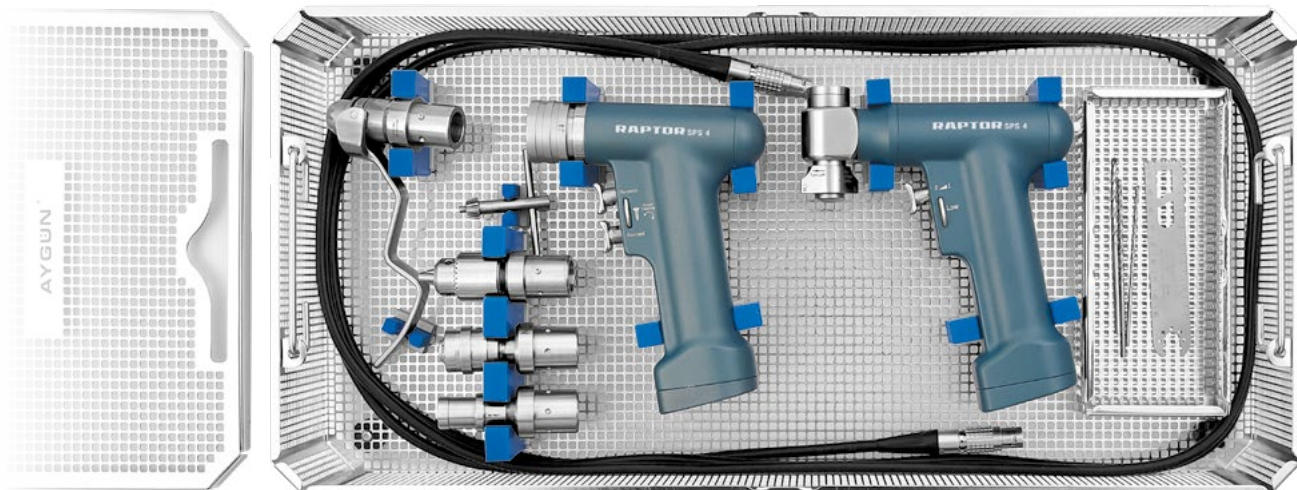
High-Low speed options
Steam sterilisable
11.000 - 14.000 cpm / $\angle 4^\circ 50'$
40 x 152 x 196 mm / 1070 g

BLADES (for M206-300)



Code	Length	Width	Thickness
M103-390	35 mm	25 mm	0.8 mm
M103-391	50 mm	40 mm	0.8 mm
M103-392	35 mm	75 mm	0.8 mm

ORTHOPEDIC SET



M300-1001 Orthopedic Set

Set Content

M300-200	Drill-Reamer Handpiece
M300-228	Raptor Power Supply
M300-223	Motor cable
M206-309	Drill attachment with keyed chuck
M7-502	Drill bit
M7-504	Drill bit
M7-250	Chuck key for M206-309
M300-300	Sagittal saw Handpiece
M103-1117	Sagittal saw blade
M103-1146	Sagittal saw blade
M206-320	Acetabular reamer attachment
M206-330	Reamer attachment for wire and pin
M206-352	Quick - action chuck (K-wire Driver)
M14-816	Spray oil
K3-2723-S3	Basket with silicone fixations 546 x 259 x 114 mm
K6-022	Standard Model Container 600 x 285 x 155 mm



M300-228
Raptor Power Supply



M14-816
Spray oil, for motor and additional pcs.
After cleaning of every use. Oil inside of all moving pcs of device by spraying method and run the device for 2-3 seconds.

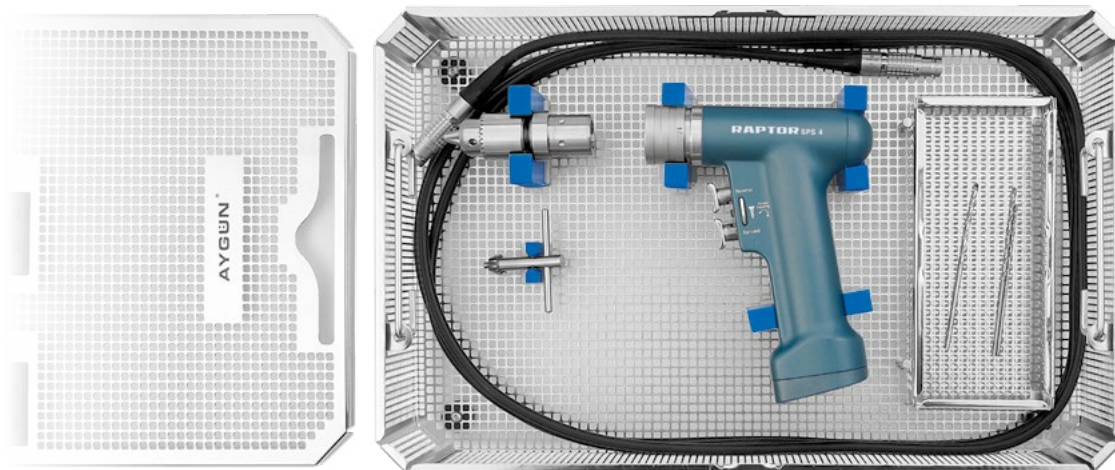


K6-022
Standard Model Container
Box (non perforated) Lid perforated
600 x 285 x 155 mm



K3-2723-S3
Basket with silicone fixations
546 x 259 x 114 mm

DRILL SET



M300-1005 Drill Set

Set Content

M300-200	Drill-Reamer Handpiece
M300-228	Raptor Power Supply
M300-223	Motor cable
M206-309	Drill attachment with keyed chuck
M7-502	Drill bit
M7-504	Drill bit
M7-250	Chuck key for M206-309
M14-816	Spray oil
K3-2731-S12	Basket with silicone fixations 411 x 259 x 114 mm
K6-252	Standard Model Container 475 x 285 x 155 mm



M300-228
Raptor Power Supply



M14-816
Spray oil, for motor and additional pcs.
After cleaning of every use. Oil inside of all moving pcs of device by spraying method and run the device for 2-3 seconds.

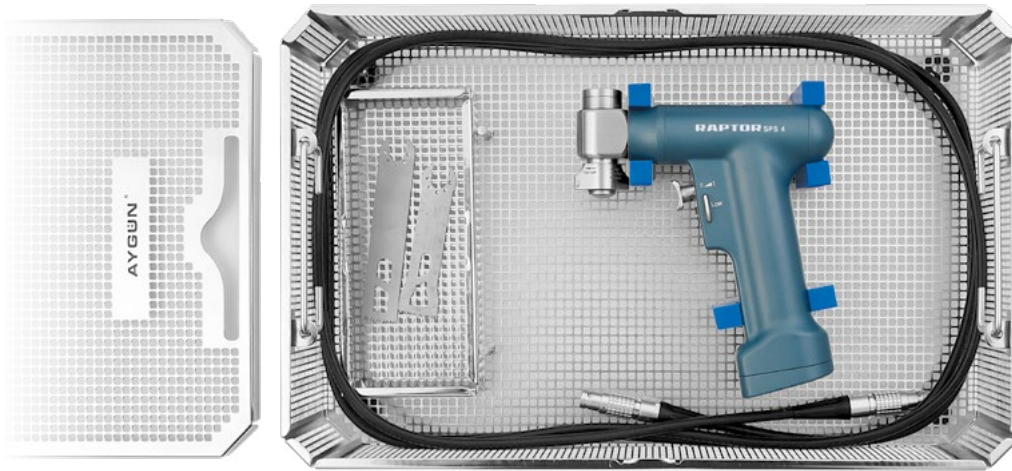


K6-252
Standard Model Container
Box (non perforated) Lid perforated
475 x 285 x 155 mm



K3-2731-S12
Basket with silicone fixations
411 x 259 x 114 mm

SAGITTAL SAW SET



M300-1007 Sagittal Saw Set

Set Content

M300-300	Sagittal saw Handpiece
M300-228	Raptor Power Supply
M300-223	Motor cable
M103-1117	Sagittal saw blade
M103-1146	Sagittal saw blade
M14-816	Spray oil
K3-2731-S13	Basket with silicone fixations 411 x 259 x 114 mm
K6-252	Standard Model Container 475 x 285 x 155 mm



M300-228
Raptor Power Supply



M14-816
Spray oil, for motor and additional pcs.
After cleaning of every use. Oil inside of all moving pcs of device by spraying method and run the device for 2-3 seconds.

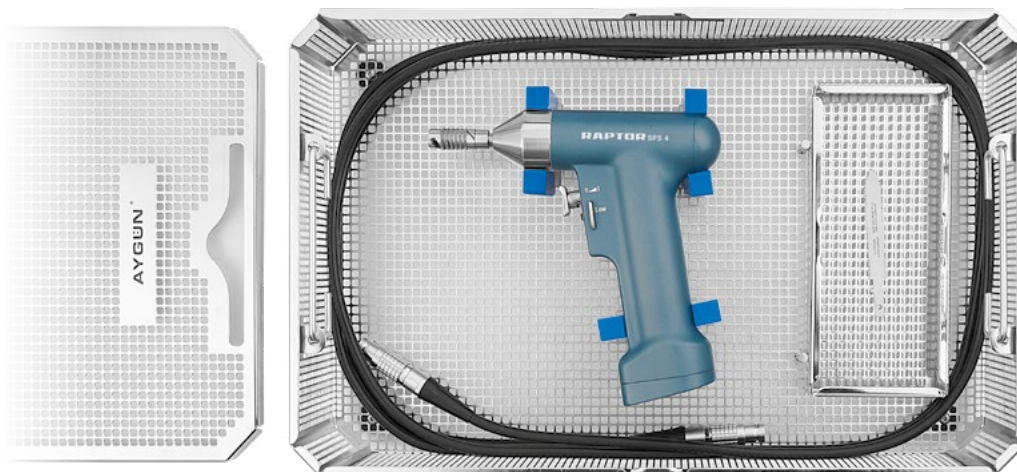


K6-252
Standard Model Container
Box (non perforated) Lid perforated
475 x 285 x 155 mm



K3-2731-S13
Basket with silicone fixations
411 x 259 x 114 mm

RECIPROCATING SAW SET



M300-1013 Reciprocating Saw Set

Set Content

M300-235	Reciprocating saw Handpiece
M300-228	Raptor Power Supply
M300-223	Motor cable
M103-239	Reciprocating saw blade
M14-816	Spray oil
K3-2731-S14	Basket with silicone fixations 411 x 259 x 114 mm
K6-252	Standard Model Container 475 x 285 x 155 mm



M300-228
Raptor Power Supply



M14-816
Spray oil, for motor and additional pcs.
After cleaning of every use. Oil inside of all moving pcs of device by spraying method and run the device for 2-3 seconds.

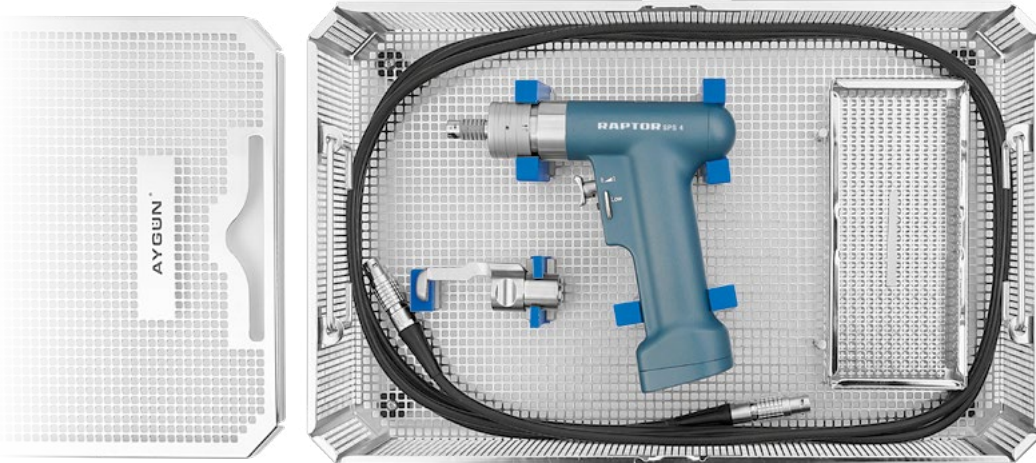


K6-252
Standard Model Container
Box (non perforated) Lid perforated
475 x 285 x 155 mm



K3-2731-S14
Basket with silicone fixations
411 x 259 x 114 mm

STERNAL SAW SET



M300-1009 Sternal Saw Set

Set Content

M300-240	Sternum saw Handpiece
M300-228	Raptor Power Supply
M300-223	Motor cable
M103-715	Adult saw guide
M103-710	Adult saw blade
M14-816	Spray oil
K3-2731-S15	Basket with silicone fixations 411 x 259 x 114 mm
K6-252	Standard Model Container 475 x 285 x 155 mm



M300-228
Raptor Power Supply



M14-816
Spray oil, for motor and additional pcs.
After cleaning of every use. Oil inside of all moving pcs of device by spraying method and run the device for 2-3 seconds.

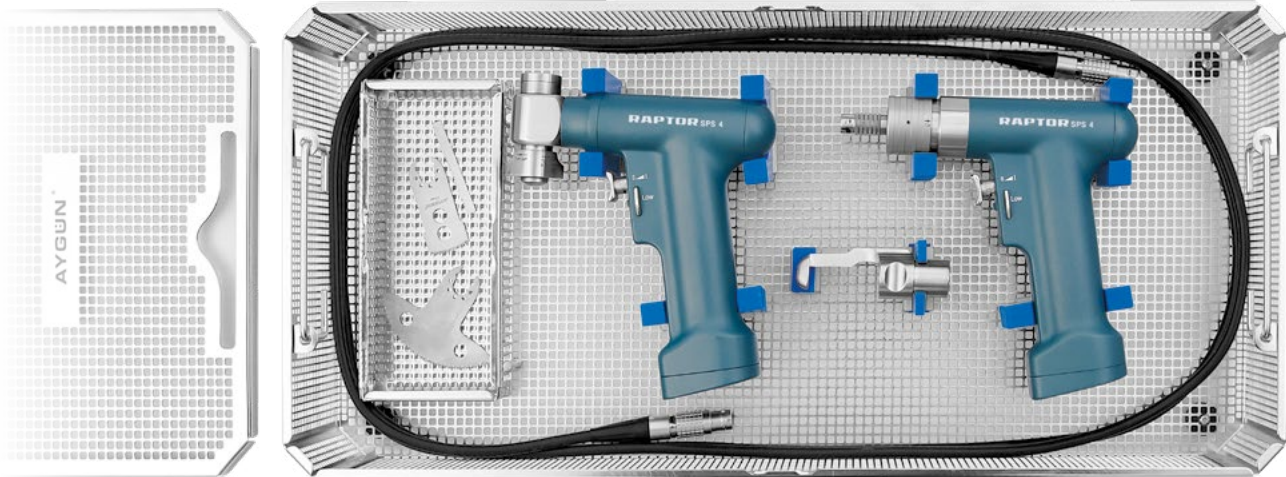


K6-252
Standard Model Container
Box (non perforated) Lid perforated
475 x 285 x 155 mm



K3-2731-S15
Basket with silicone fixations
411 x 259 x 114 mm

CARDIO VASCULAR SET



M300-1011 Cardio Vascular Set

Set Content

M300-240	Sternum saw Handpiece
M300-228	Raptor Power Supply
M300-223	Motor cable
M300-300	Re-Operation saw Handpiece
M103-715	Adult saw guide
M103-710	Adult saw blade
M103-392	Re-Operation saw blade
M14-816	Spray oil
K3-2723-S4	Basket with silicone fixations 546 x 259 x 114 mm
K6-022	Standard Model Container 600 x 285 x 155 mm



M300-228
Raptor Power Supply



M14-816
Spray oil, for motor and additional pcs.
After cleaning of every use. Oil inside of all moving pcs of device by spraying method and run the device for 2-3 seconds.



K6-022
Standard Model Container
Box (non perforated) Lid perforated
600 x 285 x 155 mm



K3-2723-S4
Basket with silicone fixations
546 x 259 x 114 mm

CONTAINER SET FOR STERILIZATION



K8-123V
Lid, B3 Barrier Model
585 x 285 mm

K6-107
Container, non perforated
600 x 272 x 138 mm



K8-343V
Lid, B3 Barrier Model
460 x 285 mm

K6-307
Container, non perforated
475 x 272 x 138 mm



K3-742
Basket made from
stainless steel sheet (with stand)
540 x 253 x 80 mm



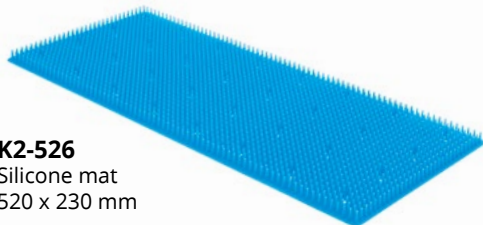
K3-750
Basket made from
stainless steel sheet (with stand)
405 x 253 x 80 mm



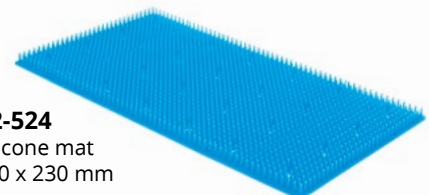
K2-462
Wire basket
540 x 245 x 70 mm











K2-1502
Wire basket
405 x 245 x 70 mm



K2-526
Silicone mat
520 x 230 mm



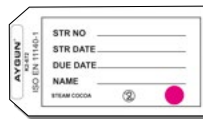
K2-524
Silicone mat
380 x 230 mm

code	color
K2-700	
K2-701	
K2-702	
K2-703	
K2-704	
K2-705	
K2-706	
K2-707	

Identification labels (aluminium)
Coloured identification labels
Engraved to your specifications
Maximum 16 letters



K2-673
Labels (paper)
100 pcs. With indicator.
For small size and special
containers



K2-672
Labels (paper)
100 pcs. With indicator.
For full and half size containers



K1-900
Modular Auto Lock Mechanism (2 Pcs)



K2-660 red
Security seal
100 pcs made of plastic



K2-740
Single use paper
filter 100 pcs
with indicator.
Aygun mark.

INDEX

CODE	PAGE	CODE	PAGE	CODE	PAGE	CODE	PAGE	CODE	PAGE
K1-900	31	M7-520	10	M7-755	15	M14-816	24, 25	M103-1139	21
K2-462	30	M7-521	10	M7-756	15	M103-236	17	M103-1140	21
K2-524	30	M7-522	10	M7-757	15	M103-237	17	M103-1141	21
K2-526	30	M7-523	10	M7-789	15	M103-238	17	M103-1142	21
K2-660	31	M7-524	10	M7-905	12	M103-239	17	M103-1143	21
K2-672	31	M7-525	10	M7-906	12	M103-390	23	M103-1144	21
K2-673	31	M7-526	10	M7-907	12	M103-391	23	M103-1145	21
K2-700	31	M7-527	10	M7-908	12	M103-392	23	M103-1146	21
K2-701	31	M7-528	10	M7-920	13	M103-709	22	M103-1147	21
K2-702	31	M7-529	10	M7-921	13	M103-710	22	M206-308	9
K2-703	31	M7-530	10	M7-922	13	M103-711	22	M206-309	9
K2-704	31	M7-540	10	M7-923	13	M103-712	22	M206-310	9
K2-705	31	M7-541	10	M7-924	13	M103-715	22	M206-311	9
K2-706	31	M7-542	10	M7-925	13	M103-716	22	M206-312	11
K2-707	31	M7-543	10	M7-926	13	M103-1110	18	M206-320	11, 14
K2-740	31	M7-544	10	M7-927	13	M103-1111	18	M206-330	12
K2-1502	30	M7-545	10	M7-928	13	M103-1112	18	M206-349	16
K3-742	30	M7-546	10	M7-929	13	M103-1113	19	M206-352	16
K3-750	30	M7-547	10	M7-930	13	M103-1114	19	M206-353	16
K3-2723-S3	24	M7-548	10	M7-931	13	M103-1115	19	M206-360	10
K3-2723-S4	29	M7-549	10	M7-932	13	M103-1116	19	M206-361	10
K3-2731-S12	25	M7-550	10	M7-933	13	M103-1117	19	M206-362	10
K3-2731-S13	26	M7-560	10	M7-934	13	M103-1118	19	M206-375	11
K3-2731-S14	27	M7-561	10	M7-935	13	M103-1119	20	M206-376	11
K3-2731-S15	28	M7-562	10	M7-936	13	M103-1120	20	M206-377	11
K6-022	24	M7-563	10	M7-937	13	M103-1121	20	M206-378	11
K6-252	25	M7-564	10	M7-938	13	M103-1122	20	M206-380	11
K8-123V	30	M7-565	10	M7-939	13	M103-1123	20	M206-381	11
K8-343V	30	M7-566	10	M7-940	13	M103-1124	20	M300-200	8
M7-250	9, 11, 12	M7-567	10	M7-941	13	M103-1125	20	M300-223	7
M7-252	9	M7-568	10	M7-942	13	M103-1126	20	M300-228	7
M7-253	9	M7-569	10	M7-943	13	M103-1127	20	M300-235	17
M7-500	9	M7-570	10	M7-944	13	M103-1128	20	M300-240	22
M7-501	9	M7-705	14	M7-945	13	M103-1129	20	M300-300	18, 23
M7-502	9	M7-706	14	M7-946	13	M103-1130	20	M300-1001	24
M7-503	9	M7-707	14	M7-947	13	M103-1131	20	M300-1005	25
M7-504	9	M7-708	14	M7-960	13	M103-1132	20	M300-1007	26
M7-505	9	M7-709	15	M7-961	13	M103-1133	20	M300-1009	28
M7-506	9	M7-750	15	M7-962	13	M103-1134	20	M300-1011	29
M7-507	9	M7-751	15	M7-963	13	M103-1135	20	M300-1013	27
M7-508	9	M7-752	15	M7-964	13	M103-1136	21		
M7-509	9	M7-753	15	M7-965	13	M103-1137	21		
M7-510	9	M7-754	15	M8-473	9	M103-1138	21		



Headquarter

Hermann Müller Medizintechnik GmbH
Dr. Karl-Storz-Strasse 3
78532 • Tuttlingen • Germany

T : +49 7461 4125
F : +49 7461 79263

Factory

Kerimbeyosb Mah.
Yaşardođu Cad. No: 76/1
55330, Tekkeköy/Samsun/Türkiye

www.hermannmuller.com
info@hermannmuller.com

All rights reserved.No part of this catalog may
be reproduced in any form without the written
permission from Hermann Müller